



## DL 10-165/T

- quick mounting
- shock-resistant housing
- high efficiency

The 10W powered speaker is equipped with a 165mm full-range loudspeaker and a 100V transformer with 3 power adjustments. The powder coated metal similar in RAL 9010 guarantees long-term stability. Quick and easy mounting with spring clamps and short tension distance. The speaker is connected by a 2-pin push-clamp.

Special paint of the speaker in 4-digit RAL- or NCS-colour available at extra cost.

This speaker is suitable for a ceiling strength of about 2 – 45 mm. Our specification is primarily related to solid ceilings, for ceilings with soft materials a higher ceiling thicknesses could be necessary. In addition, stronger cables and other fittings may also result in changes of the appropriate setup. With regard to the variety of materials and manufacturers, we recommend to build in a sample of the speaker to match the requirements accurately.

## Technical Data

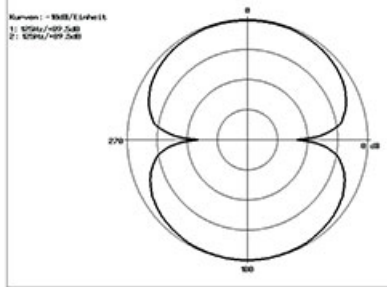
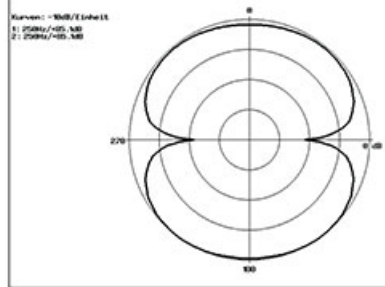
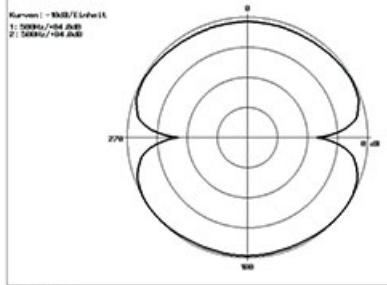
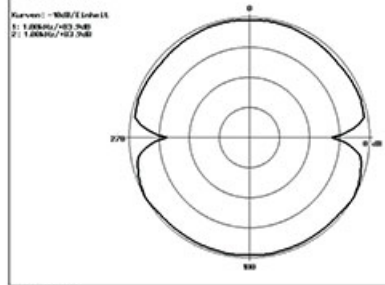
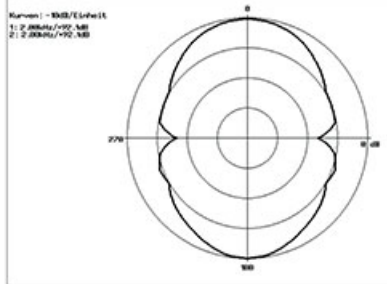
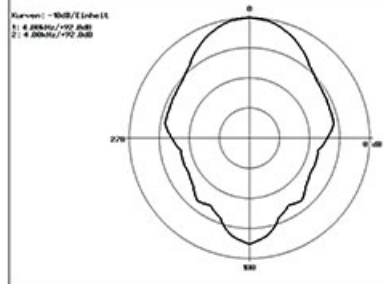
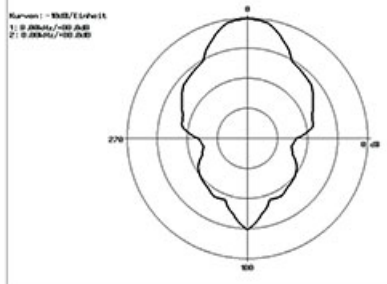
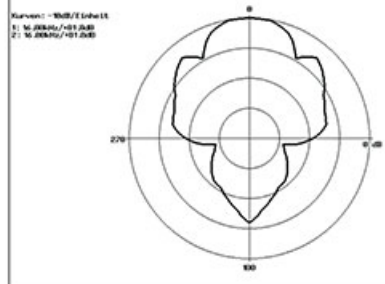
|                    |                     |
|--------------------|---------------------|
| Description        | DL 10-165/T         |
| Power              | 10/6/3/1,5 W        |
| Frequency Range    | 100 - 17.000 Hz     |
| Frequency Response | 72 - 24.000 Hz      |
| SPL 1W/1m, peak    | 97,5 dB             |
| SPL Pmax/1m, peak  | 107,5 dB            |
| Sensitivity 1W/1m  | 90,4 dB             |
| Dispersion (-10dB) | 177° (h) / 177° (v) |
| Temperature range  | -20 / +80 °C        |
| Dimensions         | 220x105 mm          |
| Weight (net)       | 1,20 kg             |
| Colour             | RAL 9010            |
| Connector          | 2-pin push clamp    |
| Mounting           | Quick fit mounting  |
| Packing Unit       | 12                  |
| Accessories        | F 165 plus          |
| Ceiling Cut-out    | 195 mm              |

Please note: Because of many different types of ceiling materials and ceiling strengths we recommend to build in a sample of the speaker to match the requirements accurately.

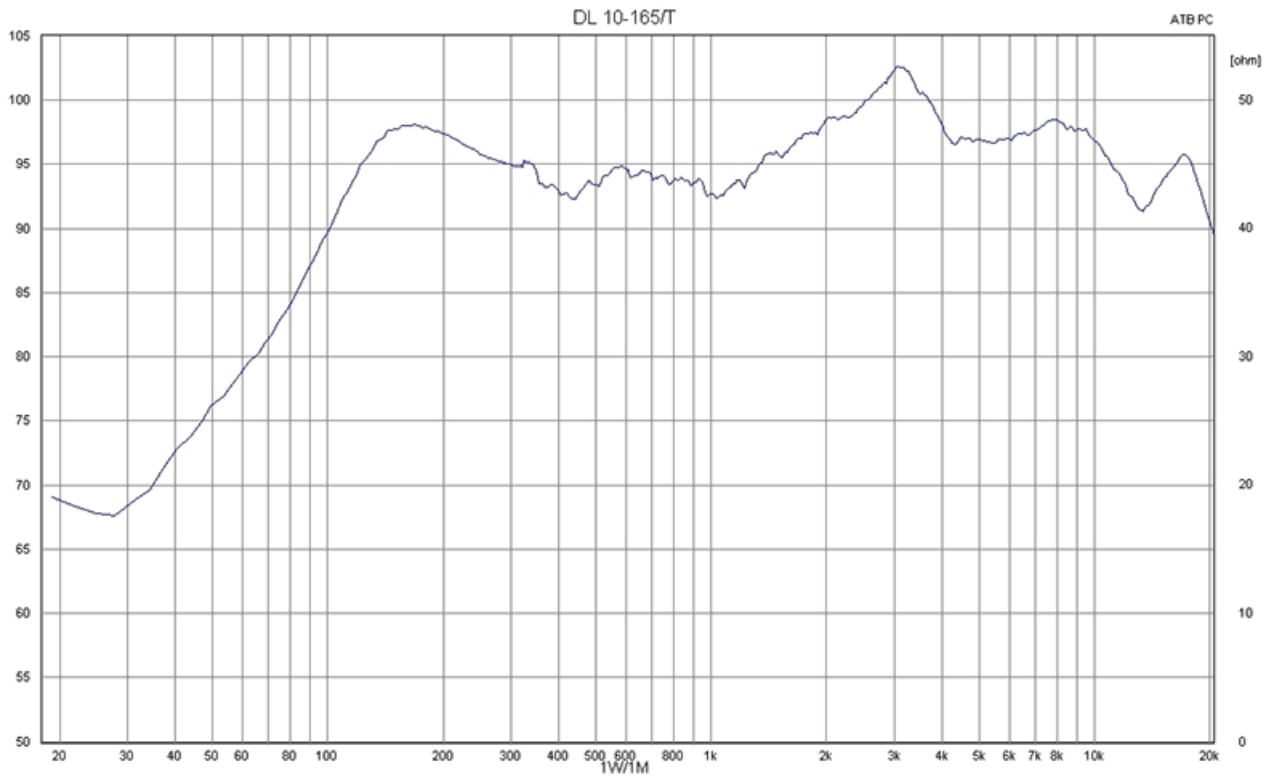
## Product Attributes



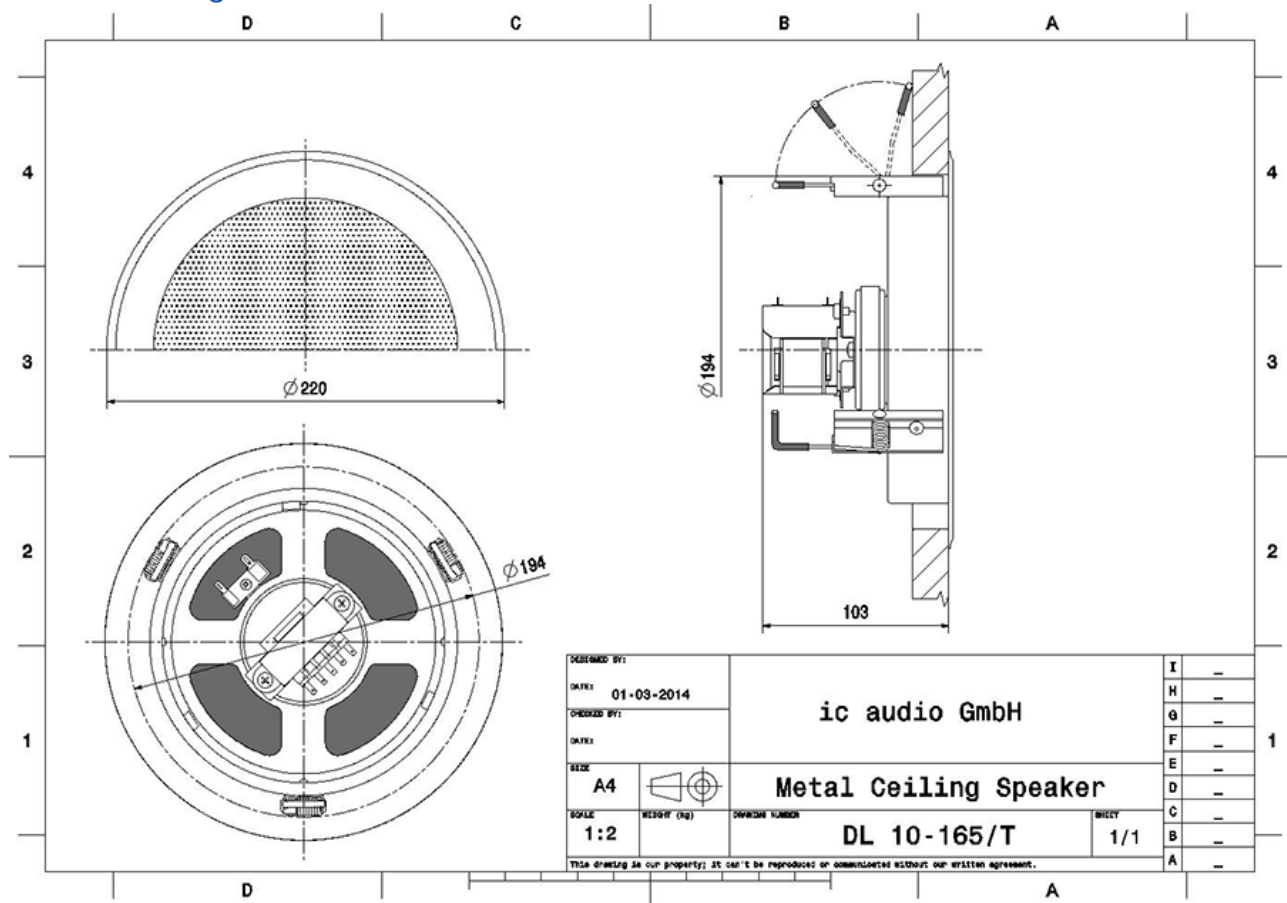
## Polar Diagrams

**125 Hz**

**250 Hz**

**500 Hz**

**1000 Hz**

**2000 Hz**

**4000 Hz**

**8000 Hz**

**16000 Hz**


### Frequency Response Diagrams



## Technical Diagrams



Measurements according to DIN IEC 268-5 | RoHS compliant (2011/65/EU)



Article Nr.:  
50622030

Packing Unit:  
12

